

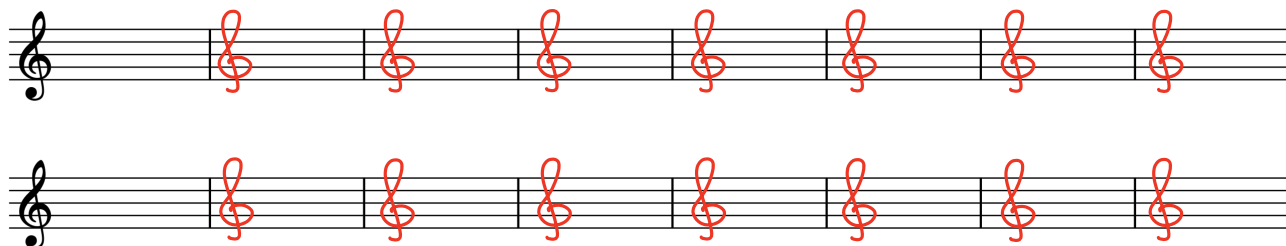


# 樂理初階 工作紙

## 單元二：譜號 (Clefs)

---

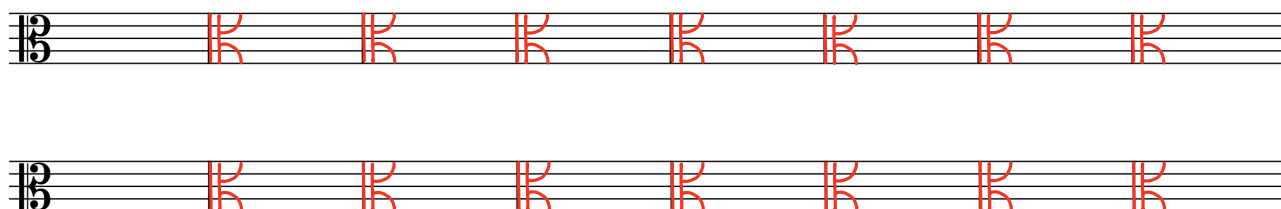
1. 試寫出高音譜號 (Treble Clef)



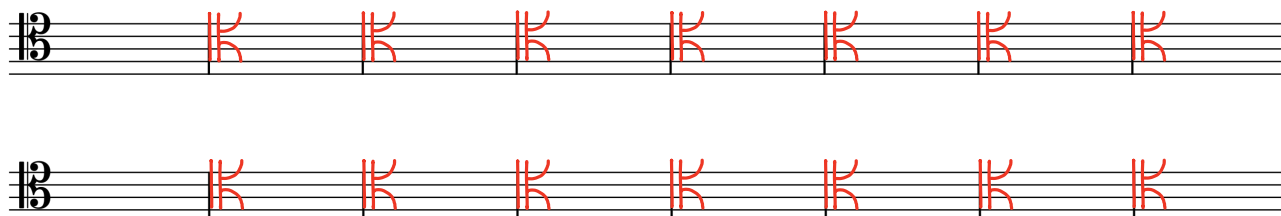
2. 試寫出低音譜號 (Bass Clef)



3. 試寫出中音譜號 (Alto Clef)



4. 試寫出次中音譜號 (Tenor Clef)



## 單元三：拍子時值 (Time Values)

寫出以下音符之中文及英文名稱。

音符	中文名稱	英文名稱	音符	中文名稱	英文名稱
	全音符	semibreve		四分音符	crotchet
	八分音符	quaver		附點二分音符	dotted minim
	二分音符	minim		附點四分音符	dotted crotchet
	附點二分音符	dotted minim		全音符	semibreve
	八分音符	quaver		二分音符	minim
	四分音符	crotchet		附點四分音符	dotted crotchet

## 單元四：拍子記號 (Time Signatures)

寫出以下拍子記號的意思，然後寫出相關的拍子時值 (以拍為單位)。

	拍子記號的意思	相關之拍子時值
1.	<p><b>4/4</b></p> <p>一個小節內有 <b>4</b> 拍</p> <p><b>4</b> 分音符為一拍</p>	<p>○ = <b>4</b> 拍    ♩ = <b>1½</b> 拍</p> <p>♩. = <b>3</b> 拍    ♪ = <b>1</b> 拍</p> <p>♩ = <b>2</b> 拍    ♪ = <b>½</b> 拍</p>
2.	<p><b>6/8</b></p> <p>一個小節內有 <b>6</b> 拍</p> <p><b>8</b> 分音符為一拍</p>	<p>○ = <b>8</b> 拍    ♩ = <b>3</b> 拍</p> <p>♩. = <b>6</b> 拍    ♪ = <b>2</b> 拍</p> <p>♩ = <b>4</b> 拍    ♪ = <b>1</b> 拍</p>
3.	<p><b>3/2</b></p> <p>一個小節內有 <b>3</b> 拍</p> <p><b>2</b> 分音符為一拍</p>	<p>○ = <b>2</b> 拍    ♩ = <b>¾</b> 拍</p> <p>♩. = <b>1½</b> 拍    ♪ = <b>½</b> 拍</p> <p>♩ = <b>1</b> 拍    ♪ = <b>¼</b> 拍</p>

試圈出屬於單拍子之拍子記號。

**3/2**

6/8

**4/2**

9/4

**2/4**

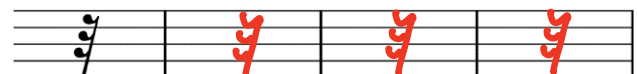
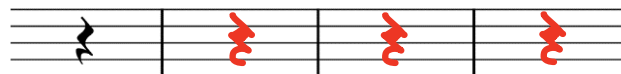
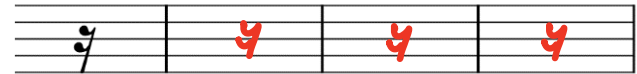
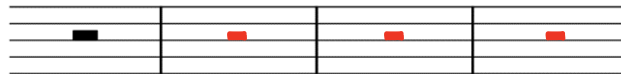
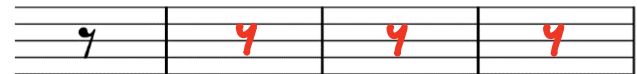
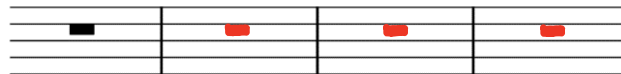
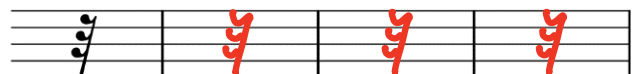
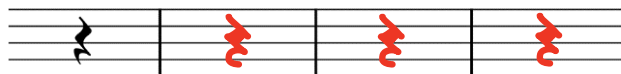
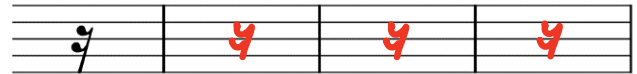
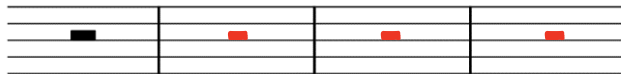
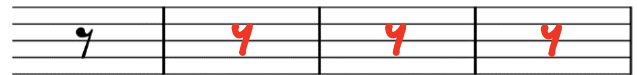
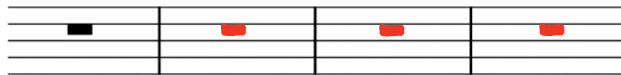
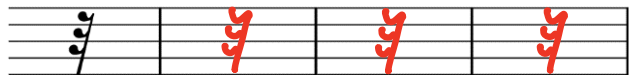
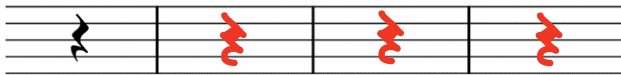
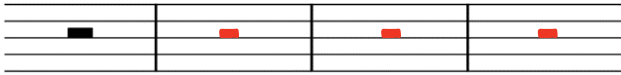
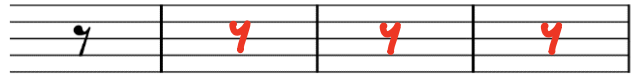
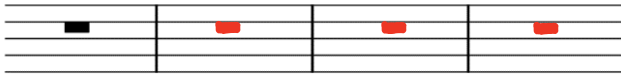
12/16

6/16

**3/8**

# 單元六：休止符 (Rests)

寫出以下休止符。



## 單元八：音量 (Dynamics)

以「>」或「<」符號，比較下列強弱符號的程度。

1. mf < f

2. p > pp

3. ff > mf

4. p < mp

5. mp < mf

6. ff > f

7. mp > pp

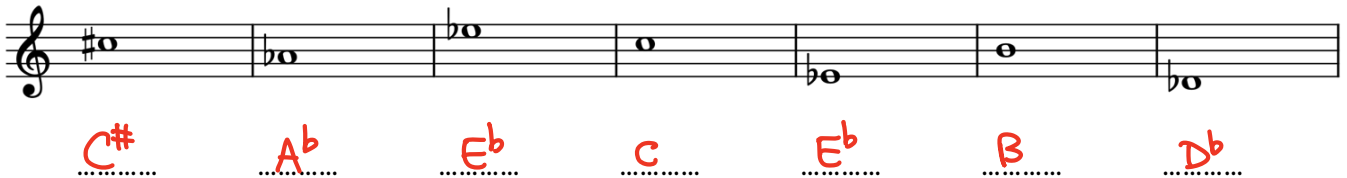
8. p < mf

9. mf > p

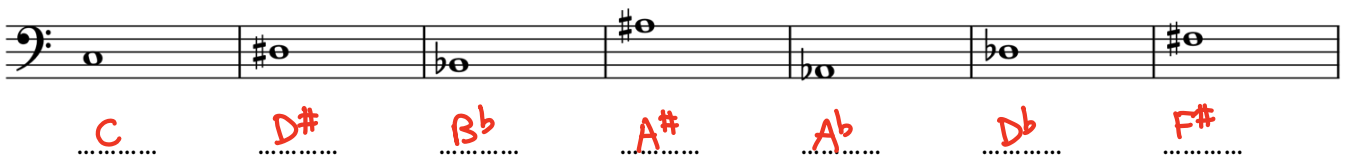
10. pp > ppp

## 單元十：音名 (Letter Names)

寫出下列音符之音名。



A musical staff in treble clef with a key signature of one sharp (F#). The notes are: C# (first line), Ab (second space), Eb (third line), C (third space), Eb (second space), B (second line), and Db (first space). Below each note is its letter name in red handwriting on a dotted line.



A musical staff in bass clef with a key signature of one sharp (F#). The notes are: C (first space), D# (second line), Bb (second space), A# (third line), Ab (third space), Db (second space), and F# (first space). Below each note is its letter name in red handwriting on a dotted line.



A musical staff in treble clef with a key signature of one flat (Bb). The notes are: Db (second space), Gb (third line), G# (third space), B (third space), F# (second space), C (second space), and C# (first space). Below each note is its letter name in red handwriting on a dotted line.